

CTE Z20 Truck Mounted Access Platform

Robert Chumley
Cherry Picker Hire

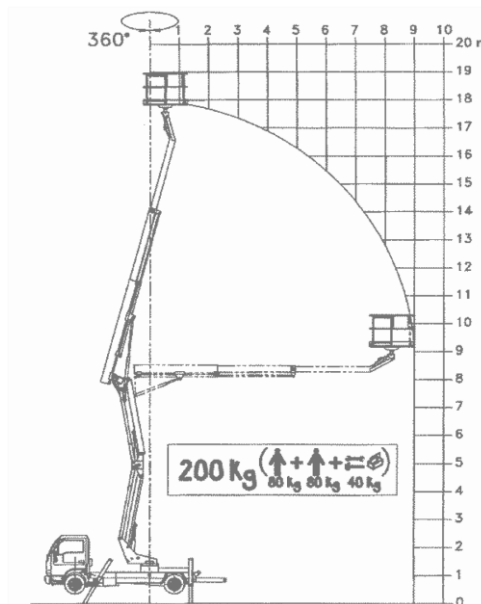


This truck mounted cherry picker has an articulated and telescopic boom and with its zero tail swing and light weight chassis it makes it ideal for working in town centres and pedestrianised areas

Do you need an access platform with superb versatility?

**Call now on
01656 664163 or
07710 501412**

Specifications



- ① Maximum Length in travel position 6600 mm
- ② Maximum weight in travel position 2100 mm
- ③ Maximum height in travel position 2900 mm
- ④ Boom Weight 1800 kg
- ⑤ Stabilizer load weight 2800 daN
- ⑥ Load Capacity with stabilizers 200 kg
- ⑦ Maximum Working height (Platform floor) 17.80 m
- ⑧ Maximum Out Reach (Edge of Basket) 9.0 m

BRIDGEND

CARDIFF

SWANSEA

NEATH

SOUTHWALESCHERRYPICKERS.CO.UK